

SINCE 1965 | NORTH AMERICA'S FAVORITE MANUFACTURER OF TRUCK CAMPERS - AND NOW TRAVEL TRAILERS

WWW.LANCETRAILER.COM

travel trailers 2012



DSI
BY THE DEALER SATISFACTION INDEX

Lance

**10-YEAR WINNER
DSI QUALITY CIRCLE AWARD**

EXCELLENCE IN PRODUCT DESIGN
EXCELLENCE IN ENGINEERING
EXCELLENCE IN MANUFACTURING
EXCELLENCE IN CUSTOMER SUPPORT



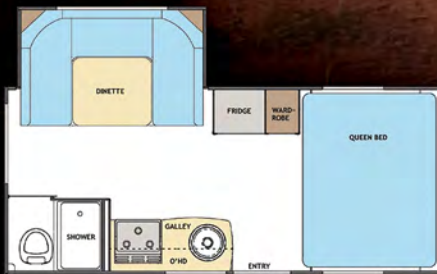
Ultralight travel trailers | Six perfect matches for pickup trucks and mid-sized SUVs

Lance

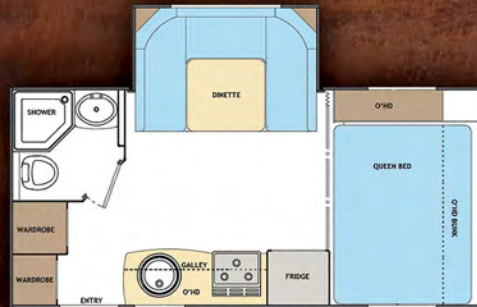


basic specs + floorplans

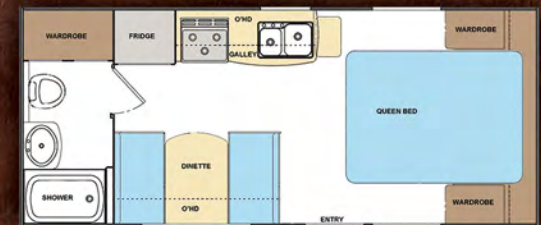
Lance ultralight travel trailers are some of the most technologically advanced RVs on the road today. Spacious floorplans. Luxurious amenities. Superb engineering, design and construction that comes from 47 years of experience in manufacturing quality RVs. We're confident once you see a Lance, you'll recognize the difference.



1575 15'5" INTERIOR FLOOR LENGTH
19'6" OVERALL EXTERIOR LENGTH
2480 POUNDS GROSS DRY WEIGHT



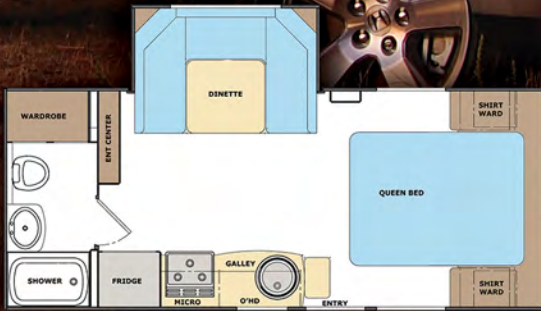
1685 16'3" INTERIOR FLOOR LENGTH
20'9" OVERALL EXTERIOR LENGTH
3450 POUNDS GROSS DRY WEIGHT



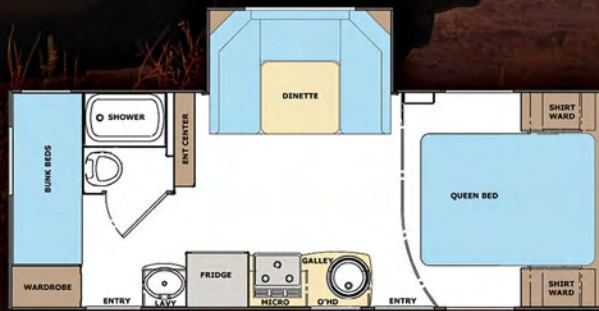
1881 18'2" INTERIOR FLOOR LENGTH
22'8" OVERALL EXTERIOR LENGTH
3220 POUNDS GROSS DRY WEIGHT

Convertible queen sofa/bed option available on the 1881

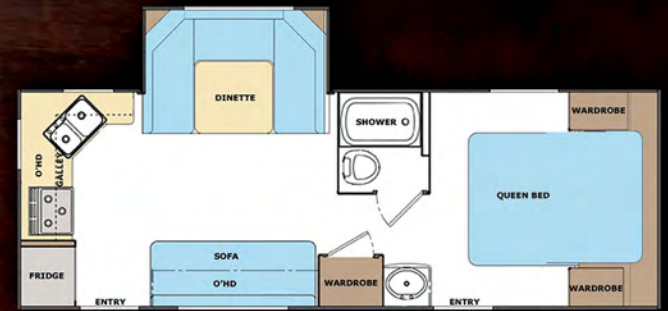
	GROSS DRY WEIGHT (POUNDS)	HITCH (TONGUE) DRY WEIGHT (POUNDS)	HITCH BALL SIZE	AXLE WEIGHT (POUNDS)	CARGO CARRYING CAPACITY (POUNDS)	GVWR (GROSS VEHICLE WEIGHT RATING - POUNDS)	PREMIUM, HEAVY-DUTY, RUBBER TORSION-BAR SUSPENSION AXLES WITH EZ-LUBE WHEEL BEARINGS	TIRE SIZE	SELF-ADJUSTING ELECTRIC BRAKES (*2" MEANS THE TWO BRAKES OF A SINGLE AXLE - *4" MEANS THE FOUR BRAKES OF A DOUBLE AXLE)	INTERIOR FLOOR LENGTH	INTERIOR HEIGHT	EXTERIOR HEIGHT - INCLUDING THE STANDARD HD TV ANTENNA (THE ANTENNA IS THE HIGHEST POINT ON ANY TRAILER - REGARDLESS OF AIR CONDITIONER OPTION)
Lance 1575	2480	250	2"	2230	1020	3500	Standard	ST20575R14	Standard/2	15'5"	78"	117"
Lance 1685	3450	346	2-5/16"	3104	1910	5400	Standard	ST20575R14	Standard/4	16'3"	78"	119"
Lance 1881	3220	325	2-5/16"	2895	1940	5200	Standard	ST20575R14	Standard/4	18'2"	78"	119"
Lance 1985	3670	375	2-5/16"	3295	1890	5600	Standard	ST20575R14	Standard/4	18'10"	78"	119"
Lance 2185	4330	590	2-5/16"	3740	1630	6000	Standard	ST20575R14	Standard/4	21'2"	78"	119"
Lance 2285	4200	450	2-5/16"	3750	1760	6000	Standard	ST20575R14	Standard/4	22'6"	78"	119"



1985 18'10" INTERIOR FLOOR LENGTH
23'4" OVERALL EXTERIOR LENGTH
3670 POUNDS GROSS DRY WEIGHT
*Convertible queen sofa/bed
option available on the 1985*



2185 21'2" INTERIOR FLOOR LENGTH
25'8" OVERALL EXTERIOR LENGTH
4330 POUNDS GROSS DRY WEIGHT
*Convertible queen sofa/bed
option available on the 2185*



2285 22'6" INTERIOR FLOOR LENGTH
27'0" OVERALL EXTERIOR LENGTH
4200 POUNDS GROSS DRY WEIGHT

EXTERIOR WIDTH	OVERALL EXTERIOR LENGTH	FRESH HOLDING TANK (US GALLONS)	GREY HOLDING TANK(S) (US GALLONS)	BLACK HOLDING TANK (US GALLONS)	PROPANE (NUMBER OF TANKS x US GALLONS)	GENERATOR CAPABILITY - "PORTABLE" MEANS AN OWNER-SUPPLIED, GASOLINE-POWERED PORTABLE GENERATOR	REFRIGERATOR - POWER MODE TYPE AND CUBIC FEET ("TWO-WAY" MEANS 110-VOLT AC AND PROPANE POWER MODES AVAILABLE - "THREE-WAY" MEANS 12-VOLT DC, 110-VOLT AC AND PROPANE POWER MODES AVAILABLE)	STANDARD FURNACE OUTPUT (BTUs)	15,000 / 22,000-BTU DUAL-OUTPUT FURNACE	OPTIONAL AIR CONDITIONER OUTPUT (BTUs)	SLEEPING CAPACITY	QUEEN BED SIZE	BUNK BED(S) SIZE	DINETTE BED SIZE	SOFA BED SIZE
84-3/8"	19'6"	26	26	25	1 x 5	Portable	Three-way power mode/5	18,000	-	9000 or 13,500	4	60"x80"	-	46"x78"	-
96-3/8"	20'9"	30	30	30	2 x 5	Portable	Two-way power mode/6	20,000	Optional	9000 or 13,500	5	60"x80"	29"x94"	54"x78"	-
96-3/8"	22'8"	30	30	30	2 x 5	Portable	Two-way power mode/6	20,000	Optional	9000 or 13,500	4	60"x80"	-	40"x72"	-
96-3/8"	23'4"	30	30	30	2 x 5	Portable	Two-way power mode/6	25,000	Optional	9000 or 13,500	4	60"x80"	-	54"x78"	-
96-3/8"	25'8"	30	30	30	2 x 5	Portable	Two-way power mode/6	25,000	Optional	9000 or 13,500	7	60"x80"	3 x 29"x75"	54"x78"	-
96-3/8"	27'0"	30	30 x 2	30	2 x 5	Portable	Two-way power mode/6	25,000	Optional	9000 or 13,500	6	60"x80"	-	54"x78"	42"x72"

Lance 1575



The 1575 is an all-new slideout travel trailer like no other. It's designed for 3500-pound tow-rated vehicles (and up) - with plenty of capacity to spare. New technology and components have helped us create this sensational trailer. It's the same great Lance quality with a dry bath, a double-door refrigerator, three-burner range, queen bed - and much, much more!



Rain Forest interior

Lance 1685



“Super-slideout” – with 54”x78” U-shaped dinette. Overhead storage throughout. Truly ultralight – only 3450 pounds dry weight. Three wardrobe closets. Under-bed storage accessible from either inside or outside the coach – in addition to pass-through exterior storage. Sleeps up to five. Some options for this model include front rockguard window, awning slideout cover, and pull-out storage tray.



Red Rock interior

Lance 1881

The 1881 is a full-featured trailer in an easy-to-tow 18-foot package. The 1881 floorplan features a front queen walk-around bed and a great rear bath area with a tub shower, separate lavatory and tons of storage. The comfortable dinette converts into a bed. And you can also order it with an optional convertible queen sofa/bed for additional seating.



Gold Rush interior



Lance 1985



The new Lance 1985 features our very popular "super-slideout" dinette and walk-around bed features - and combines them with a full-trailer-width rear bathroom and spacious galley area. There's an abundant amount of storage in this model as well. Options for the 1985 include convertible queen sofa/bed, and pull-out storage tray.



Red Rock interior

Lance 2185

The 2185 is perfect for the long-distance traveler or for family and friends. It's a unique lightweight trailer with a rear triple-bunk that can also convert into a large exterior storage garage. Equipped standard to sleep up to seven people in only a 21-foot-long floorplan, a huge U-shaped dinette slideout provides a dance-floor-type feel in the center of the trailer. The forward queen bed has a walk-around on both sides. Options available for this model include convertible queen sofa/bed, and pull-out storage tray.



Rain Forest interior



Lance 2285

“Super-slideout” – 54”x78”

U-shaped dinette. Island (walk-around) queen bed. Rear kitchen. Two entry doors. Large center-located wardrobe. Pass-through exterior storage. Under-bed storage accessible from inside the trailer. Pull-out sofa/bed standard. Sleeps up to six. Options include swivel rockers (replacing the pull-out sofa/bed), awning slideout cover, and pull-out storage tray.



Gold Rush interior with optional swivel rockers



selected optional features + highlights



WITH 148 LESS ROOF HOLES in our trailers (by using vent clamps), we eliminate unnecessary screw holes - which help protect your RV investment.



12-VOLT DISCONNECT | Easily shut-off the 12-volt battery power to the trailer without the need for tools.



TANK FLUSH cleans your black tank without a mess. Simple hose hookup with a built-in sprayer.



EASY-RELEASE TIRE CARRIER is quick and easy. No need to crawl under the trailer to release the spare tire if needed.



EASY PROPANE ACCESS | Flip-up top on the propane tank cover. Allows you to easily turn on or off the propane bottles - as well as seeing the regulator.



EXTERIOR PROPANE CONNECTOR | Using your stored propane to fire-up your low-pressure propane equipment can be done quickly and safely.



A **HITCH LIGHT** is conveniently placed on the front of the trailer near the hitch assembly - providing light while you hitch-up in the dark.



CABLE/SATELLITE HOOKUPS | Two standard inputs allow both cable and satellite TV without switching coax cables on the TV inside.

AN OPTIONAL, HEAVY-DUTY PHAT™ LADDER is available on all models (except the 1575), which will give you access to the WALK-ON ROOF when necessary.



standard features + options

EXTERIOR

- Laminated fiberglass bonded exterior with Azdel® substrate
- Manual tongue jack
- Electric tongue jack (option 415)
- Front and rear stabilizer jacks
- Aluminum wheels with radial tires
- Spare tire carrier
- Spare tire (option 380)
- Single aluminum step
- Double step
- Radius slider tinted windows
- Radius acrylic tinted thermopane Euro windows
- Radius tinted insulated dual-pane sliding windows (option 771)
- Front rock guard window (option 543)
- Front acrylic window (option 542)
- Ladder (option 639)
- Tail lights with backup
- Diamond-plate lower front stone guard
- License plate holder and light
- Radius cornered storage compartment doors
- Radius entry door with window
- Egress window in bedroom
- Roof vent in bed area
- Roof vent in living area
- Exterior wash station
- Exterior propane connection
- Bike rack (option 650)
- Swing-out entry assist handle (option 635)
- Pull-out storage tray (option 646)
- Slideout cover awning (option 605)
- Powered 10-foot rollout awning (option 603)
- Powered 12-foot rollout awning (option 603)
- Powered 15-foot rollout awning (option 603)
- Powered 18-foot rollout awning (option 603)

CONSTRUCTION + INSULATION

- One-piece TPO (thermoplastic polyolefin) roof
- One-piece fiberglass roof
- Laminated/insulated floor, ceiling, sidewalls, front and rear
- Block foam insulation throughout
- Aluminum-framed walls, sides, front and rear
- Aluminum-framed floor and ceiling

THE LANCE LOOK™ INTERIOR DESIGN + DECOR

- Red Rock terra cotta interior decor palette (option 16)
- Gold Rush ebony interior decor palette (option 17)
- Rain Forest moss interior decor palette (option 18)
- Sofa bed
- Swivel rockers (option 119)
- Hardwood framed flat panel cabinet doors
- Decorative pull cabinet hardware



Four-Season Certified

The three options below comprise the Four-Season Package – which qualifies your trailer for the Four-Season Certified badge – features that will assure you the fun of all-weather recreation:

- Radius tinted insulated dual-pane windows.
- Heated, enclosed holding tanks.
- Water heater bypass and winterizing valve.

THE 2012 LANCE TRAVEL TRAILER BROCHURE. ©2011 Lance Camper Manufacturing Corporation (LCMC). All rights reserved. Lance, the Lance logomark, the Lance logomark with chevron, America's Favorite Truck Camper, RV: Recreational Versatility, The Most Versatile RVs On The Planet, America's Favorite Campers - Earth's Most Versatile RVs, The Lance Look, Lance Custom Design, Bed-Maid, LanceLock, Living The Lance Life, SportsCamper and other exclusive Lance product names, marks or designations are trademarks, service marks or registered trademarks of LCMC. All other marks are property of their respective owners. **All product data, graphics and photography in this book were as accurate as possible at press time. Subsequent refinements during the model year may be evident in the actual product. LCMC reserves the right to change prices, colors, materials, equipment and specifications without notice – as well as to add, modify or discontinue models shown in promotional materials and/or on its websites.** All weights, fuel and liquid capacities are approximate and dimensions are nominal. LCMC has designed its travel trailers to provide a variety of potential users for owners. Each model features optimum living, storage, fluid, seating and sleeping capacities. Though each owner enjoys this potential, ultimately, it's that purchaser's sole responsibility to select the proper Lance travel trailer and towing equipment appropriate to their tow vehicle without exceeding safe operating and towing capacities. Your Factory Authorized Lance Dealer can advise you of the operating parameters for your particular situation, and can confirm prices and product specifications material to your purchase decision. This book was designed and produced entirely in-house by LCMC's Creative Director/Sales + Marketing. Web litho in USA on Sterling® Ultra. CS/0911/60M

1575	1685	1881	1985	2185	2285		1575	1685	1881	1985	2185	2285
THE LANCE LOOK™ INTERIOR DESIGN + DECOR – continued												
\$	\$	\$	\$	\$	\$	Lite-Ply® cabinet construction	\$	\$	\$	\$	\$	\$
\$	\$	\$	\$	\$	\$	Window valance boxes	\$	\$	\$	\$	\$	\$
0	0	0	0	0	0	Mini-blinds in galley	\$	\$	\$	\$	\$	\$
\$	\$	\$	\$	\$	\$	Mini-blinds in living area	\$	\$	\$	\$	\$	\$
\$	\$	\$	\$	\$	\$	Day/night shades in dinette	\$	\$	\$	\$	\$	\$
\$	\$	\$	\$	\$	\$	Mini-blinds in bedroom	\$	\$	\$	\$	\$	\$
0	0	0	0	0	0	Combo screen/shade on windows	\$					
\$						Wall clock	\$	\$	\$	\$	\$	\$
\$	\$	\$	\$	\$	\$	Key hanger	\$	\$	\$	\$	\$	\$
GALLEY/APPLIANCES + EQUIPMENT												
0	0	0	0	0	0	Three-burner range	\$	\$	\$	\$	\$	\$
0	0	0	0	0	0	Three-burner high-output range with 21-inch oven/cover (option 300)	0	0	0	0	0	0
0						Microwave oven (option 310)	0	0	0	0	0	0
0	0	0	0	0	0	Three-way power-mode, five-cubic-foot refrigerator	\$					
\$	\$	\$	\$	\$	\$	Two-way power-mode, six-cubic-foot refrigerator	\$	\$	\$	\$	\$	\$
\$	\$	\$	\$	\$	\$	Dual 15,000/22,000-BTU furnace (option 750)	0	0	0	0	0	0
\$	\$	\$	\$	\$	\$	Propane tank cover	\$	\$	\$	\$	\$	\$
\$	\$	\$	\$	\$	\$	Range hood with light and fan	\$	\$	\$	\$	\$	\$
\$	\$	\$	\$	\$	\$	Laminate galley top	\$	\$	\$	\$	\$	\$
\$	\$	\$	\$	\$	\$	Laminate counter tops and tables	\$	\$	\$	\$	\$	\$
\$	\$	\$	\$	\$	\$	Folding galley extension	\$	\$	\$	\$	\$	\$
\$	\$	\$	\$	\$	\$	Single sink	\$	\$	\$	\$	\$	\$
\$	\$	\$	\$	\$	\$	Double sink	\$					
\$	\$	\$	\$	\$	\$	High-spout galley faucet	\$	\$	\$	\$	\$	\$
0	0	0	0	0	0	Sink cover	\$	\$	\$	\$	\$	\$
0	0	0	0	0	0	Wood magazine and spice racks	\$	\$	\$	\$	\$	\$
FRESH + WASTE WATER SYSTEMS												
0						Water pump with in-line filter	\$	\$	\$	\$	\$	\$
0						Tankless, instantaneous, propane-fired water heater	\$					
0	0					Propane/electric DSI water heater	\$	\$	\$	\$	\$	\$
0						Water heater bypass and winterizing valve (option 700)	0	0	0	0	0	0
						Winterizing valve	\$					
\$	\$	\$	\$	\$	\$	Enclosed, insulated and heated fresh water tank	\$	\$	\$	\$	\$	\$
\$	\$	\$	\$	\$	\$	Enclosed, insulated and heated holding tanks (option 741)	0	0	0	0	0	0
BATHROOM												
\$	\$	\$	\$	\$	\$	Marine toilet with foot pedal	\$	\$	\$	\$	\$	\$
\$	\$	\$	\$	\$	\$	Black tank flush	\$	\$	\$	\$	\$	\$
\$	\$	\$	\$	\$	\$	Tub-style pan	\$					
						Shower pan	\$	\$	\$	\$	\$	\$
						Medicine cabinet with mirror door	\$	\$	\$	\$	\$	\$
0	0	0	0	0	0	Mirror on bath door	\$	\$	\$	\$	\$	\$
0	0	0	0	0	0	Towel rod on wall	\$	\$	\$	\$	\$	\$
0	0	0	0	0	0	Towel ring	\$	\$	\$	\$	\$	\$
						Shower curtain with tieback	\$	\$	\$	\$	\$	\$
0						Dual-pane skylight	\$	\$	\$	\$	\$	\$
\$	\$	\$	\$	\$	\$	Ducted heat outlet	\$	\$	\$	\$	\$	\$
\$	\$	\$	\$	\$	\$							

1575	1685	1881	1985	2185	2285		1575	1685	1881	1985	2185	2285
DINETTE												
						Dinette with reversible cushions	\$	\$	\$	\$	\$	\$
BEDROOM												
						Deluxe queen innerspring mattress with pillow top	\$	\$	\$	\$	\$	\$
						Bedspread	\$	\$	\$	\$	\$	\$
						Headboard	\$	\$	\$	\$	\$	\$
						Convertible queen sofa/bed (option 118)		0	0	0		
						Lance Bed-Maid™ sleep system (option 116)	0	0	0	0	0	0
						Overhead cabinet bunk bed	\$					
						Fold-up bunk beds					\$	
						Reading lights	\$	\$	\$	\$	\$	\$
						Privacy curtain	\$	\$	\$	\$	\$	\$
ELECTRICAL												
						Systems monitor panel	\$	\$	\$	\$	\$	\$
						LED battery condition indicator	\$	\$	\$	\$	\$	\$
						55-amp converter/loadcenter	\$	\$	\$	\$	\$	\$
						45-amp converter/loadcenter	\$					
						Single battery rack	\$					
						Double battery rack	\$	\$	\$	\$	\$	\$
						Manual battery disconnect	\$	\$	\$	\$	\$	\$
						Wall switched lighting	\$	\$	\$	\$	\$	\$
						Vanity lighting over medicine cabinet	\$	\$	\$	\$	\$	\$
						Pre-wired for roof air conditioner	\$	\$	\$	\$	\$	\$
						Low-profile Coleman® 9000-BTU air conditioner with wall control (option 387)	0	0	0	0	0	0
						Low-profile Coleman® 13,500-BTU air conditioner with wall control (option 393)	0	0	0	0	0	0
						Wall thermostat	\$	\$	\$	\$	\$	\$
						Pre-wired for Fan-Tastic® roof vent	\$	\$	\$	\$	\$	\$
						Fan-Tastic® roof vent (option 370)	0	0	0	0	0	0
						Power roof vent	\$	\$	\$	\$	\$	\$
						Pre-wired for TV antenna, satellite dish and park cable	\$	\$	\$	\$	\$	\$
						High-definition TV antenna	\$	\$	\$	\$	\$	\$
						AM/FM/DVD/CD stereo with iPod® hookup and interior/exterior speakers and antenna	\$	\$	\$	\$	\$	\$
						24-inch TV (option 342)	0	0	0	0	0	0
						Switched patio light	\$	\$	\$	\$	\$	\$
						Hitch light	\$	\$	\$	\$	\$	\$
						Solar panel (option 510)	0	0	0	0	0	0
						Exterior 110-volt AC patio outlet	\$	\$	\$	\$	\$	\$

Lance warranty Lance provides a limited warranty to the original owner (purchaser) of a new 2012 Lance travel trailer to be free of defects in materials, workmanship and structural integrity (under normal use with reasonable care and routine prescribed maintenance) for a period of one year from the date of purchase – subject to exclusions for vendor-made parts and components.



LanceLock

design + construction

LanceLock™ is the exclusive process we design and construct *all* our RVs for strength and durability – using welded aluminum framing, laminated panels, and interlocking structural cabinetry.

Lance

OUR CUSTOM-DESIGNED, STATE-OF-THE-ART, 141,000-SQUARE-FOOT RV MANUFACTURING FACILITY – complete with a computer-aided product development department – computer numerical control (CNC) machines that cut and rout structural paneling to ensure uniformity and tight-tolerance fit – and welded aluminum framing using .062-inch-thickness aluminum tubing (coated with Alodine® to help protect against corrosion) – all produce products with quality rarely found in the recreational vehicle industry.



Lance Camper Manufacturing Corporation

43120 Venture Street | Lancaster California 93535-4510 USA
661 949 3322 main tel | 661 949 1262 general fax



TINTED GLASS WINDOWS

reduce glare and reject the sun's harmful rays.



SOLID, HIGH-DENSITY BLOCK FOAM INSULATION

provides a superior barrier for cool summers and warm winters.



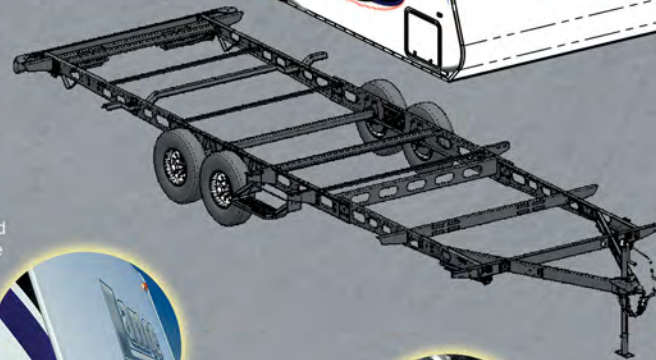
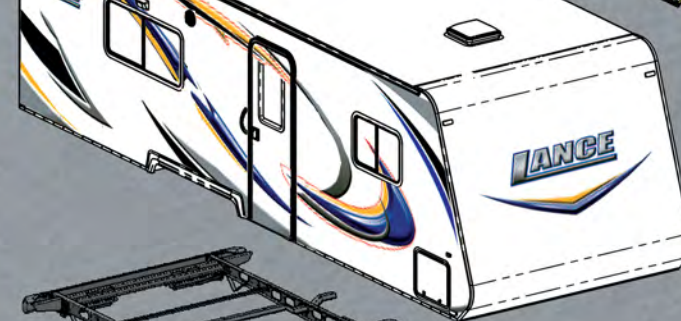
LITE-PLY® INTERLOCKING SOLID WOOD CABINETRY.

Cabinets and components are fastened together with RTA connectors. No more staples and glue.



CUSTOM-MANUFACTURED, SOLID ALUMINUM EXTERIOR SEAM MOLDINGS

ensure a tight bond and lasting beauty.



TORSION-BAR SUSPENSION AXLES.

Premium, heavy-duty rubber torsion-bar suspension axles with EZ-lube wheel bearings ensure a smooth ride.



WELDED, ALODINE®-COATED, .062" WALL-THICKNESS, ALL-ALUMINUM FRAME CONSTRUCTION

with coated steel bonding plates serve as the underlying structure of every Lance for years of reliability and outdoor fun.



ENERGYSTAR®-RATED TPO ROOF.

An incredibly tough, seamless, marine-grade, white TPO (thermoplastic polyolefin) single-piece roof doesn't chalk, resists streaking, provides added insulation – and carries a manufacturer's 12-year warranty.



SUPER-LIGHTWEIGHT, POWDER-COATED CHASSIS.

Every Lance travel trailer superstructure is mounted on a lightweight, high-strength-engineered, powder-coated, tempered steel chassis.

